

The background is a light blue color with various decorative elements: blue and orange stars of different sizes, and blue and orange circles. A large, hand-drawn orange frame surrounds the central text. At the bottom right, there is a stylized logo consisting of a blue 'U' and a yellow 'J' with hands shaking at the base.

# SURVIVING A DAY AT HORACE GREELEY

+Tips and Tricks To Make It Through!!!

**CURATED BY THE NEW CASTLE UNITED FOR YOUTH**

**SUMMER INTERNSHIP 2024**

# 7:25-7:40 SCHOOL ARRIVAL TIME



- ★ If you plan on driving to school, make sure to leave early, and plan for traffic to add 10-15 minutes to your ride
- ★ Class starts at 7:45 so arrive with some time to walk to your class, NOT at 7:45
- ★ Before heading to class, most students go to either the cafeteria or library to catch up on work or hang out with their friends
- ★ There are breakfast options available in the cafeteria like cereal and muffins for students to purchase

# READING YOUR SCHEDULE

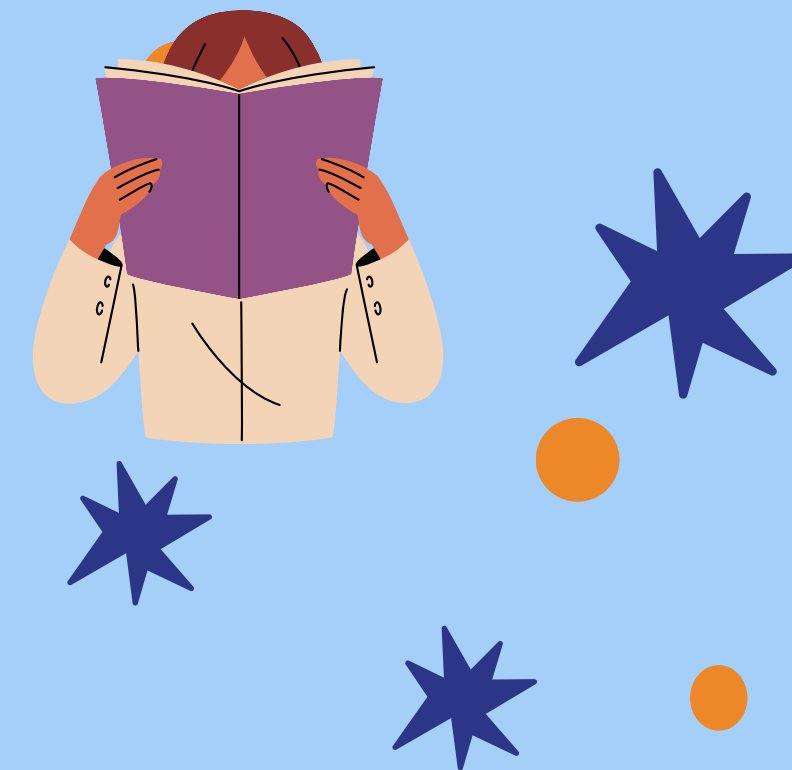
The COURSE NUMBER of a class is determined by the second to last digit of the 8-digit sequence on each class

It is good to know each course number in case of a **special schedule**, where classes are listed for everyone as course numbers. If there is a special schedule, it will be sent out via email before 7:45.

07:45 AM-08:45 AM  
7020-1134 AP US HISTORY  
Mazzini-Chin, Elizabeth  
Rm: iLab 1  
Lunch: L Lunch

07:45 AM-08:45 AM  
7020-1134 AP US HISTORY  
Mazzini-Chin, Elizabeth  
Rm: iLab 1  
Lunch: L Lunch

This would be course 3



GREELEY SPECIAL SCHEDULE		
Monday, April 8, 2024		
Eclipse Day		
<b>Day 2</b>		
7:45-8:35 Course 2		
8:40-9:30 Course 3 (science course 1)		
9:35-10:05 Early Lunch	9:35-10:25 Course 4	9:35-10:25 Course 4
10:10-11:00 Course 4	10:30-11:00 Middle Lunch	10:30-11:20 Course 6
11:05-11:55 Course 6	11:05-11:55 Course 6	11:25-11:55 Late Lunch
12:00-12:45 Course 7 (science course 5)		
12:50-1:35 Course 8		

AM  
2032-1044  
FRENCH 11  
ACCELERATED  
Calhoun, Benedicte  
Rm: Upper LS 9  
Lunch: L Lunch

10:55 AM-11:50 AM  
4500-5064  
ROBOTICS  
Arnold, Zachary  
Rm: STEAM 1  
Lunch: L Lunch

The lunch you have during special schedules is shown on your regular schedule

# DAY 5 + ACTIVITY PERIOD



- ★ Clubs meet in the morning on Day 5. Between 7:45-8:45, students come into school to meet with their clubs.
- ★ Each club has a designated space as well as a faculty advisor
- ★ The more involved you are in a club, the more likely you are to gain an executive position
- ★ Club leaders sometimes bring treats like donuts for the club period

- ★ On day 6, Freshmen go to their assigned peer groups from 7:45 to 8:25.
- ★ Freshmen meet with a group of ten other freshmen to learn about navigating the school and being a Greeley student
- ★ Peer leaders are great resources, and will answer any questions you may have, they are all Greeley juniors and seniors.
- ★ You can find their names on the Day 6 block on your schedule
- ★ Sometimes they will bring treats such as munchkins and donuts!!



# DAY 6 + PEER GROUP

# MAKING YOUR WAY TO FIRST PERIOD

When trying to navigate Greeley, the maps can sometimes be confusing, so using the signs is the most helpful way to get around. If you are having a hard time, upperclassmen are happy to help you.



L BUILDING: Located in the center of Greeley, houses social studies, English and occasional language classes

J BUILDING: Directly between L and K, houses science and math classes

K BUILDING: Found off the K bridge near the cafeteria, generally houses math and science classrooms and a seminar class (K110)

D BUILDING: In between guidance and academic commons, contains the testing center, learning center classrooms, and the student assistance counselor at the end of the hall.

C BUILDING: Houses the nurses office and learning center

## UNDERSTANDING GREELEY'S BUILDINGS



# LUNCH TIME

- ★ Lunch is served every day in the cafeteria.
- ★ There are 3 different times lunch is served, depending on your schedule: early, middle, and late
- ★ Most freshmen will have early or middle lunch.

## CAFETERIA SEATING EXPLAINED:

Different grades usually sit in different areas of the cafeteria!

**Freshmen:** sit closest to the art wing and in booths by the back windows.

**Sophomores:** sit in the same area as the freshmen but closer to the hallway.

**Juniors:** sit along the hallway and closer to the entrance.

**Seniors:** sit at round tables and booths along the entrance.



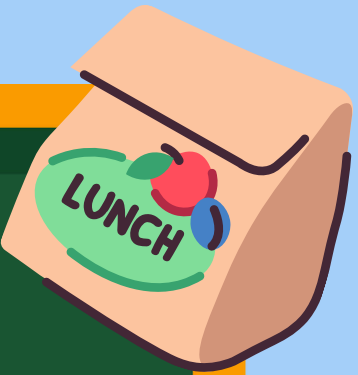
## Places to Eat/ Spend Lunch :

### To eat:

- Cafeteria
- Academic Commons
- Courtyard

### To spend time or study:

- L Building Breakouts
- Library





## HOW TO MANAGE YOUR HIGH SCHOOL WORKLOAD:

- Attend teacher office hours and schedule teacher meetings as necessary- teachers always appreciate you putting in extra time
- Utilize your free periods to study and complete homework, **especially if you play sports**
- Turn on “list view” on Canvas to see the assignment checklist
- Use canvas calendar
- Communicate with teachers about deadlines and concerns
- Download Canvas on your phone to see assignments on the go

# MANAGING YOUR WORKLOAD

The change in workload from middle school to freshman year can feel challenging, but it is still manageable. The workload will gradually increase throughout high school and you will learn to manage it as you go.



## HUMANITIES

BSU- BiPoc Student Union  
Enough - Educating Now on Understanding  
Genocide and Hate  
OLAS - Organization of Latin American Students  
AAPIA- Asian American Pacific Islander  
Association  
SAMES- South Asian Middle Eastern Society

**Interested in starting a club?  
Reach out to Lauren Pizzola,  
Greeley's Student Life  
Coordinator at  
[lapizzola@chappaquaschools.org](mailto:lapizzola@chappaquaschools.org)  
for more information!**

## ACADEMIC CLUBS

Debate  
Model UN  
Mock Trial  
Science Olympiad  
DECA - Distributive  
Education Clubs of America  
HOSA - Health  
Occupations Students of  
America

## SERVICE

914 Cares  
SHARE - Students Have a  
Responsibility Everywhere  
Relay For Life  
CT22 - Casey Taub 22  
SADD - Students Against  
Destructive Decisions  
Feeding Westchester  
No Kid Hungry  
Make-A-Wish

# CLUBS AT GREELEY

These are just a few!! There are over 100 total clubs at  
Greeley, so everyone finds something they enjoy!

## RECREATIONAL

Nitroball Club  
Enchords  
Chess club  
Quaker Notes  
Ultimate Frisbee



# END OF THE DAY!

If you are playing a sport after school head to the locker room near the gym to change. Make sure you have joined “SportsYou” for the sport you are a part of in order to receive information about where to meet and other events

Athletes usually put their equipment into the locker room in the morning before 7:45 so they don't need to carry it around all day



Traffic at Greeley can be unmatched. If riding the bus, just head straight to your bus after class. The drivers do not usually wait long due to traffic buildup, and leave at exactly at 2:40.

If you're planning to get picked up, tell your parent or guardian to meet you at Whole Foods just across the street to avoid getting stuck behind the busses. It will be a nice breezy walk!

## TRANSPORTATION INFORMATION



# RESOURCES AT GREELEY

Support is always available at Greeley. Don't hesitate to reach out to your counselor or any of the following individuals.

Rebecca Mullen - Counseling Office Department Chair

(remullen@chappaquaschools.org)

Daniel Cohen - School Psychologist

(dacohen@chappaquaschools.org)

Dr. Stephanie Lia - School Psychologist

(stlia@chappaquaschools.org)

Dr. Patrick McAuliffe - School Psychologist

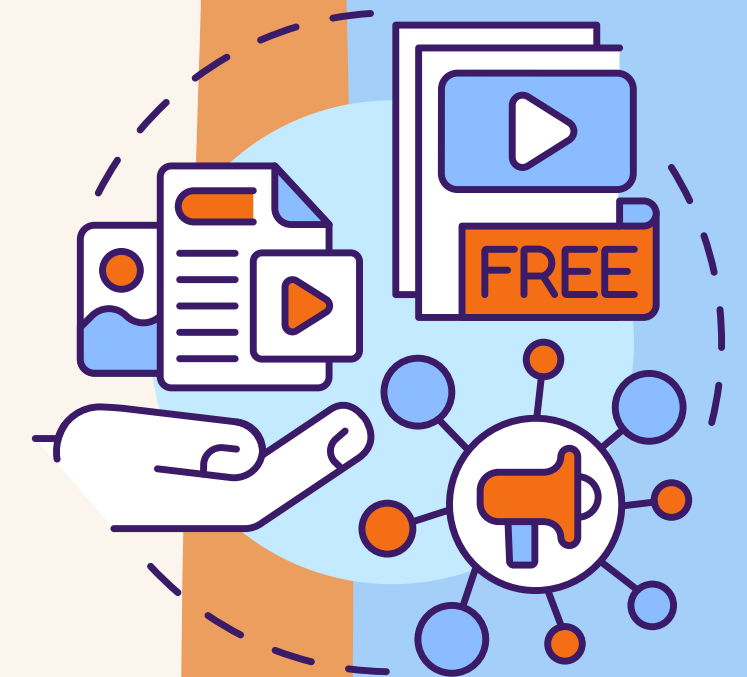
(pamcauliffe@chappaquaschools.org)

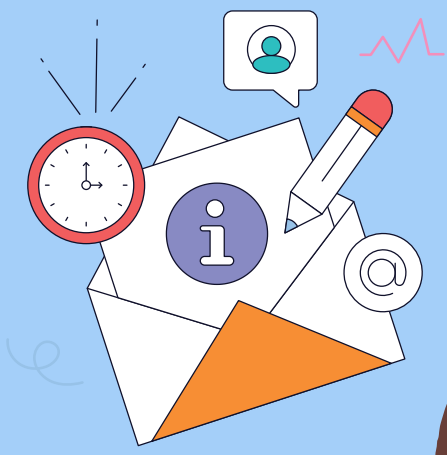
Carolyn D'Agostino - Student Assistance Counselor

(cadagostino@chappaquaschools.org)

Lauren Pizzola - Student Life Coordinator

(lapizzola@chappaquaschools.org)



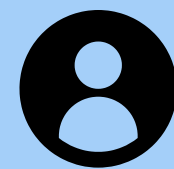


# STILL HAVE QUESTIONS?

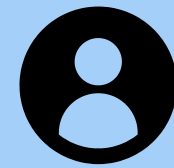
# CONTACT A GREEELEY STUDENT!

Below you can find the emails of several New Castle United for Youth high schoolers who worked on this guide.

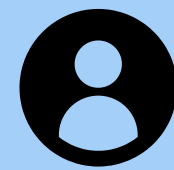
You can reach out to us with any questions you may still have!



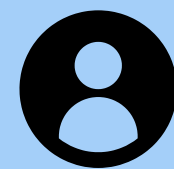
Zoya Nabeel - [zonabeel@students.chappaquaschools.org](mailto:zonabeel@students.chappaquaschools.org)



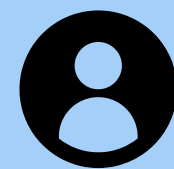
Sophie Cook- [socook@students.chappaquaschools.org](mailto:socook@students.chappaquaschools.org)



Zack Newhart - [zanewhart@students.chappaquaschools.org](mailto:zanewhart@students.chappaquaschools.org)



Iniya Padmanabhan - [inpadmanabhan@students.chappaquaschools.org](mailto:inpadmanabhan@students.chappaquaschools.org)



Maisie Lee- [maisieyunahlee@gmail.com](mailto:maisieyunahlee@gmail.com)





**HAVE A GREAT  
SCHOOL YEAR!  
XOXO, NCUFY**

